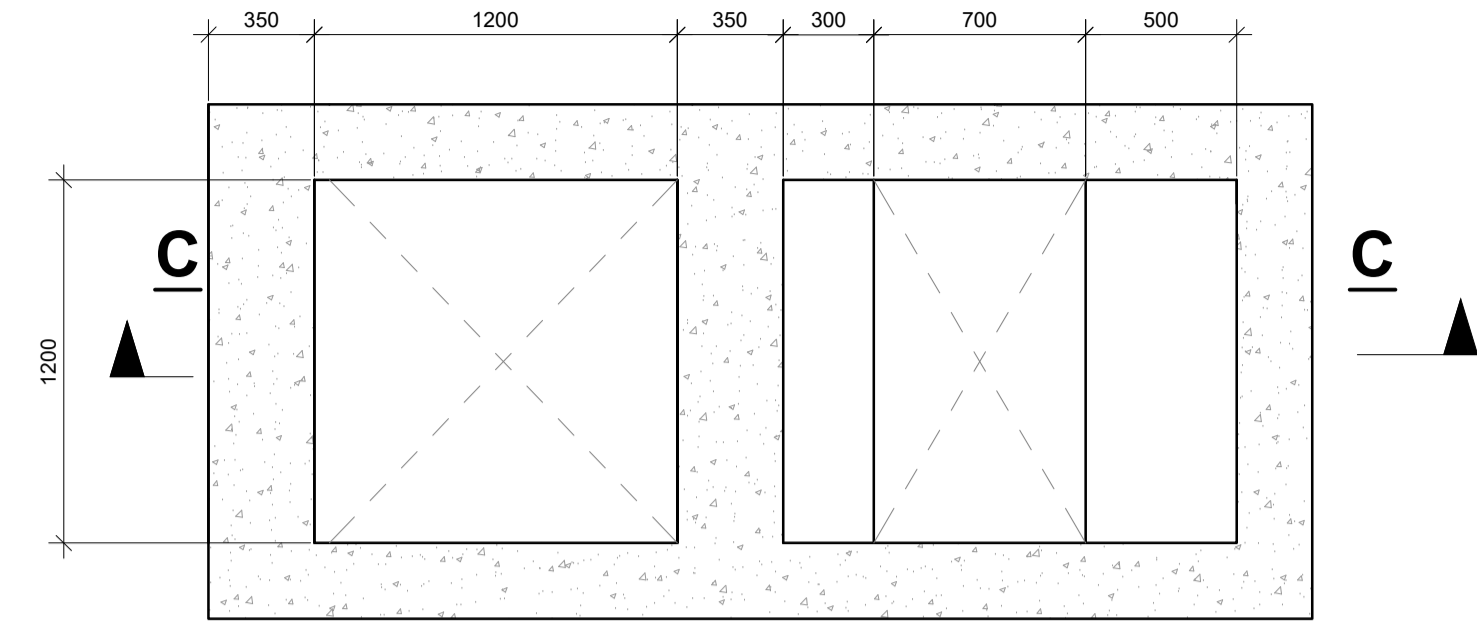


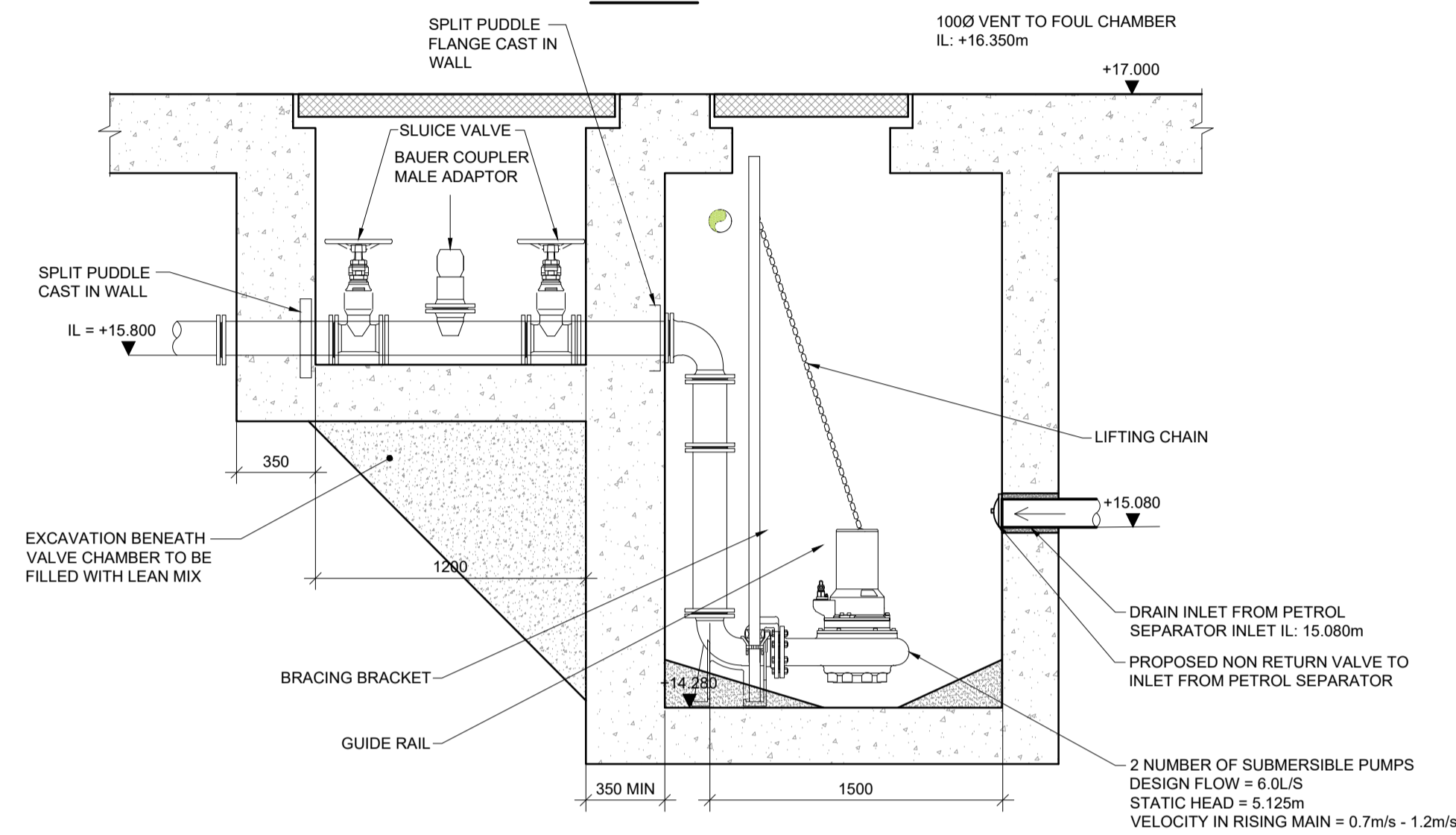
TYPICAL BOX DIMENSIONS = 2000mm LENGTH x 1650mm WIDE

BYPASS OIL SEPARATOR DETAILS

SCALE @ A1: 1:25
SCALE @ A3: 1:50



PLAN



SECTION C-C

PUMP & VALVE CHAMBER

SCALE @ A1: 1:25
SCALE @ A3: 1:50

NOTES

- THIS DRAWING IS TO BE READ IN CONJUNCTION WITH ALL ENGINEERS & ARCHITECT'S DRAWINGS FIGURED DIMENSIONS ONLY (NOT SCALING) TO BE USED. WHERE A CONFLICT OF INFORMATION EXISTS OR IF IN ANY DOUBT - 'ASK'.
- CONSULTANTS TO BE INFORMED IMMEDIATELY OF ANY DISCREPANCIES BEFORE WORK PROCEEDS.

NOTE:
CONTRACTOR IS RESPONSIBLE FOR THE DETAILED DESIGN OF SUBMERSIBLE PUMPS, RISING MAINS AND ASSOCIATED INFRASTRUCTURE TO BE APPROVED BY THE ENGINEER AND EMPLOYER REPRESENTATIVE.

NOTE:
ALL PIPE-WORK WITHIN SUMP & CHAMBER TO BE SECURELY BRACED & FIXED HORIZONTALLY & VERTICALLY. APPROVED SUBMERSIBLE FOUL PUMPS TO BE WIRED FOR DUTY/STANDBY/DUTY ASSIST OPERATION. DUCTING 100mm CAST IN SLAB. REF LUX VALVE = RV. SLUICE VALVE = SV.

COVER NOTE:
1. PUMP CHAMBER SUMP COVER TO BE "TECHNOCOVER" OR SIMILAR APPROVED SOLID TOP STEEL COVER 1200x700mm CLEAR OPE WITH EXPOSED HINGE, DEEP FRAME, WITH IN LINE LIDS, DOUBLE SEAL, TURNBUCKLE LOCK AND LIFT, CLASS C LOADING, REF TYPE SHH1/120-70/C/S2.
2. VALVE CHAMBER COVER TO BE "TECHNOCOVER" OR SIMILAR APPROVED SOLID TOP COVER 1200x1200 CLEAR OPE WITH EXPOSED HINGE, DEEP FRAME, WITH IN LINE LIDS, DOUBLE SEAL, TURNBUCKLE LOCK AND LIFT, CLASS C LOADING, REF TYPE SHH1/120-120/C/S32.

NOTE:
ACCESS HATCH SIZE AND LOCATION IS A FUNCTION OF THE PUMP SELECTION. THIS IS TO BE COORDINATED BY THE MAIN CONTRACTOR PRIOR TO CONSTRUCTION OF THE BASEMENT SLAB. PROVIDE DUTY/STANDBY PUMP ARRANGEMENT WITH PEDESTALS, GUIDE RAILS, LIFTING CHAIN, GATE VALVES, NON RETURN VALVES. PIPEWORK WITHIN SUMP, FLOAT SWITCH ASSEMBLY, CONTROL PANEL, ALL IN ACCORDANCE WITH PUMP MANUFACTURERS SPECIFICATION. CONTACT FREE FAULT OUT TO BMS IN ACCORDANCE WITH M&E CONSULTANTS SPECIFICATION. CONTROL PANEL C/W INDICATION LIGHTS FOR RUN/FAULT AND/OFF/SWITCHING. CONTROL PANEL LOCATION TO M&E CONSULTANT AND ARCHITECTS APPROVAL. AUTOMATIC TRANSFER ON PUMPS WITH BUILT IN PUMP CYCLE ON A WEEKLY BASIS. REFER TO M&E CONSULTANTS SPECIFICATION FOR POWER REQUIREMENTS.

PL2	31.05.22	PLANNING ISSUE	KS
PL1	09.11.21	ISSUED FOR PRE-APPLICATION SUBMISSION	KS
ISSUE	DATE	DESCRIPTION	BY

Project Engineer: CIARAN O'RAFFERTY | Project Director: CIARAN KENNEDY

BM STAGE

PLANNING

BM Dublin Office: Sandwith House, 52-54 Lower Sandwith Street, Dublin 2, Ireland. Tel: (01) 677 3200 Fax: (01) 677 3154
London Office: 12 Mill Street, London SE1 2AY, United Kingdom. Tel: (0044) 20 3750 3530
 BARRETT MAHONY Consulting Engineers, Civil, Structural, Project Management. E-mail: bmco@bmco.ie Web: www.bmco.ie



CLIENT
CWTC MULTI FAMILY ICAV ACTING SOLELY IN RESPECT OF ITS SUB FUND DBTR SCR1 FUND

PROJECT TITLE
BAILEY GIBSON SHD 2 | BM PROJECT No.
19117

MODEL	REFERENCE	SUITABILITY	REVISION
-------	-----------	-------------	----------

DRAWING TITLE
PROPOSED BASEMENT DRAINAGE DETAILS SHEET 2 OF 2

DWG	DRAWING REFERENCE	STATUS	REVISION
	BGL-BMD-ZZ-B1-DR-C-1223		PL2